



Neptune Software

NEPTUNE DX PLATFORM

Empower developers to drive business results...





- Software technology company that is disrupting the way enterprises are executing on their **digital transformation strategies**
- Low Code Rapid App Development Platform (RMAD) for Accelerating the development & deployment of Enterprise Apps
- Eliminate all the complexities and limitations that come with standard app development. Empower your developers to deploy **mobile, desktop** or **offline** enterprise apps in a fraction of the time, and at a fraction of the cost
- Enable your developers to be more **AGILE** so they can continuously **go-to-market faster** with new innovative apps that your business users, partners and customers can leverage immediately
- Develop enterprise apps in days instead of months!



2,500,000+
END USERS



550+
CUSTOMERS



40+
COUNTRIES



100+
PARTNERS



Improve Productivity

Decrease Costs

Increase Revenue

Digital transformation is the process of using **digital** technologies to create new – or modify existing – business processes, culture, and customer experiences to meet changing business and market requirements.

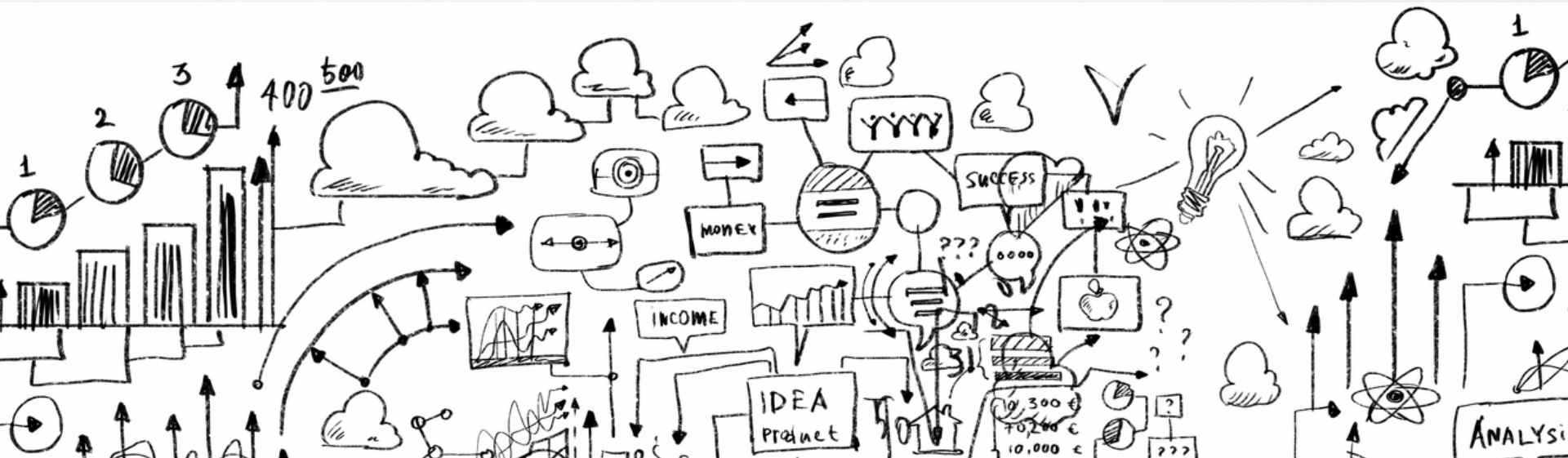
Greater Efficiency

Better user &
customer experience

Employee Satisfaction

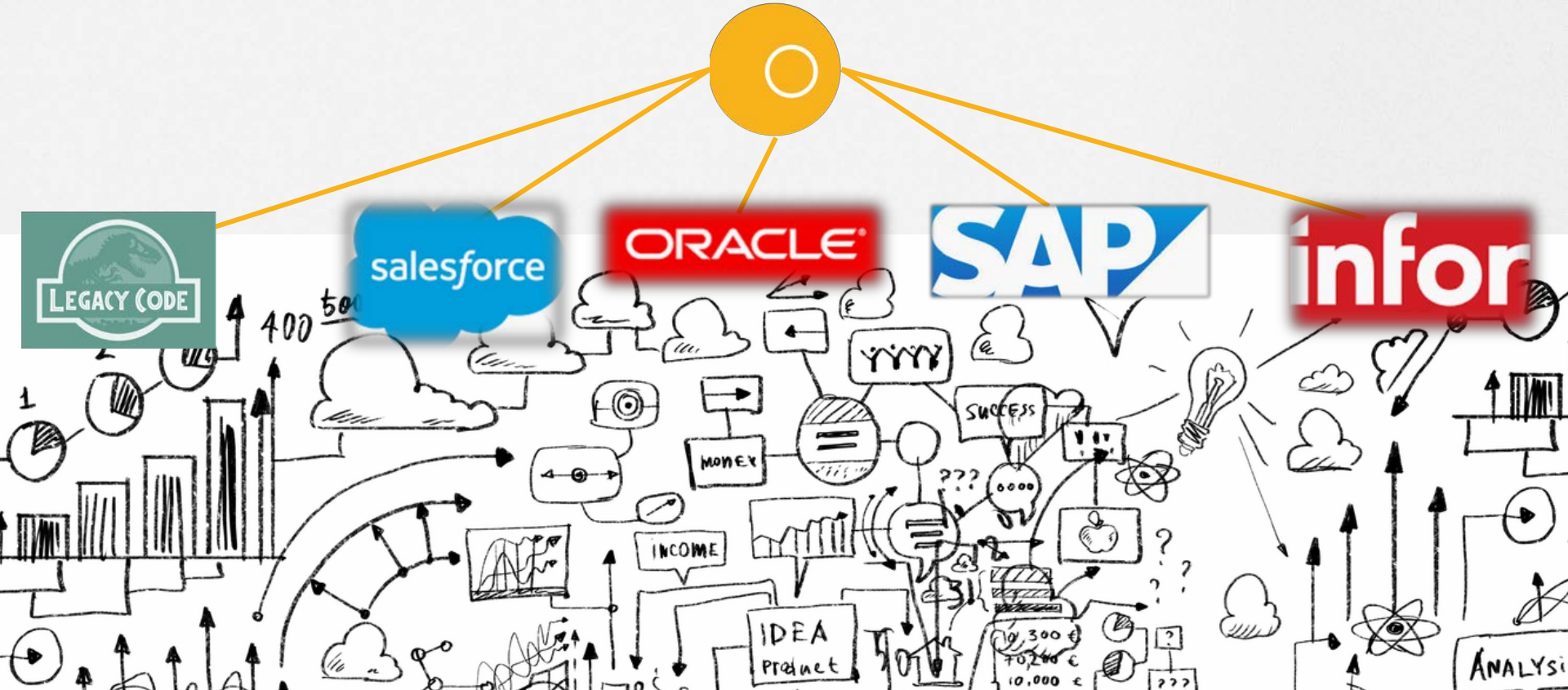
INNOVATING IN AN EVER-CHANGING MARKETPLACE TO AVOID DISRUPTION



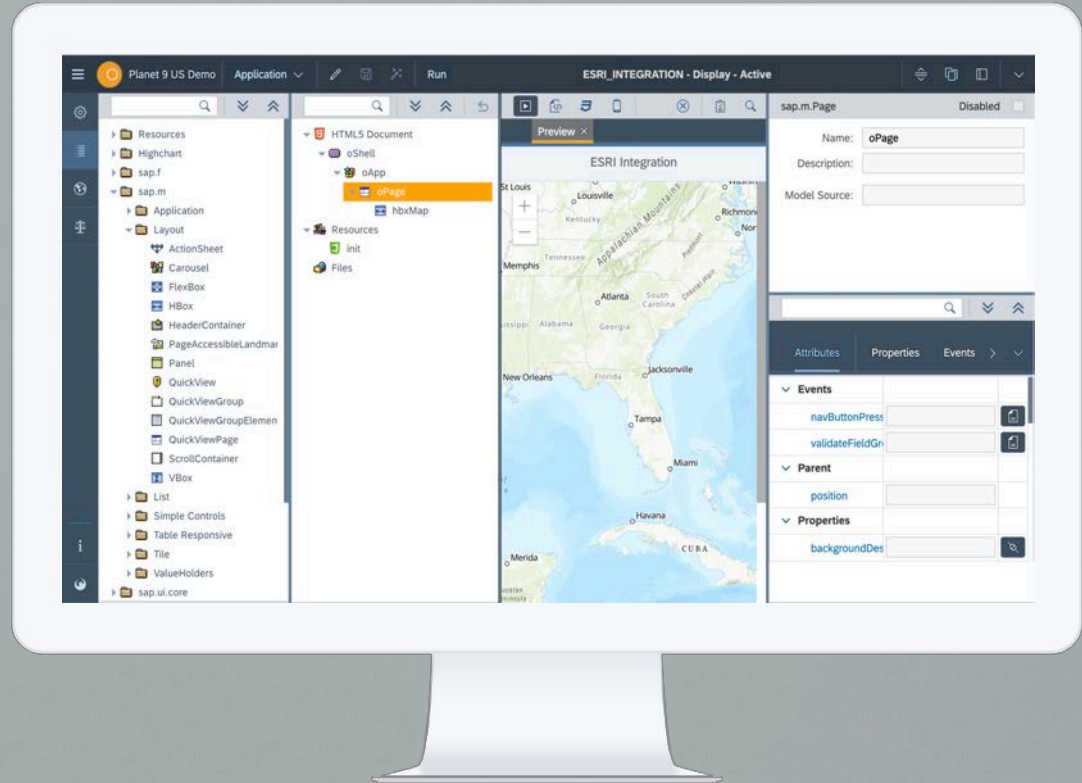




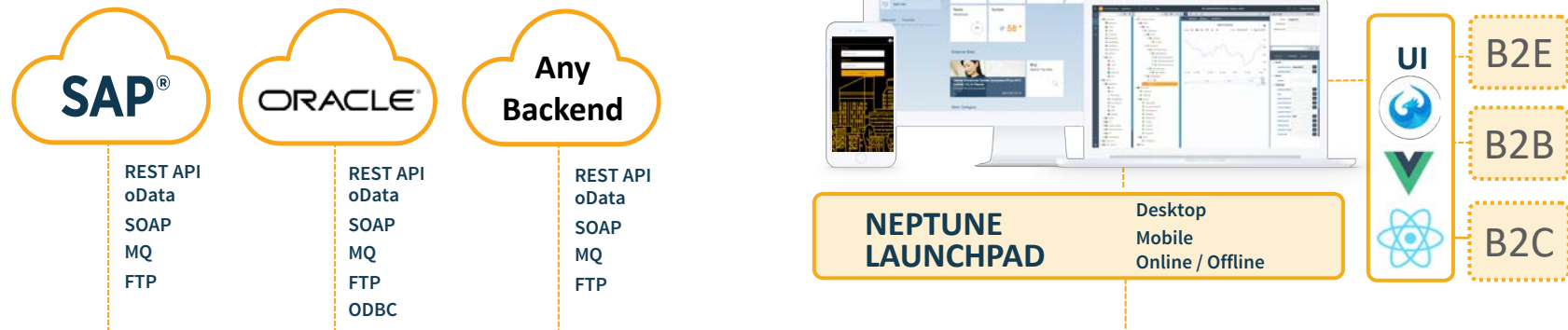
UNIFY YOUR DEVELOPER & USER EXPERIENCE



- Reduce risk in your enterprise
 - Standardized developer experience across platforms
 - Eliminate fragmentation
 - Hybrid Application Strategy
 - One development effort for Desktop, Mobile
- Identical user experience for end users
 - Drastically reduce training and onboarding expense
- Make your employees productive anywhere
 - Online
 - Offline



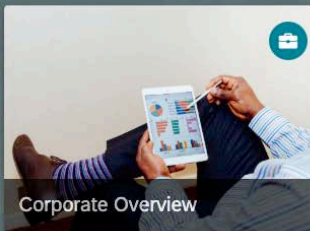
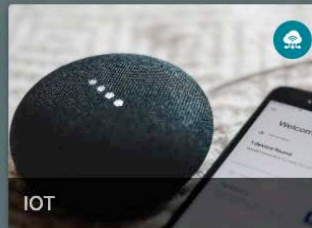
ARCHITECTURAL FLEXIBILITY IS THE ANTIDOTE TO FRAGMENTATION



NEPTUNE DX PLATFORM



Your Digital Transformation
powered by Neptune DX Platform



Agile development
approach - not just
for IT, but for all
Lines of Business...